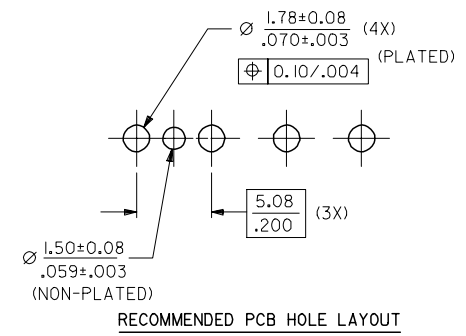
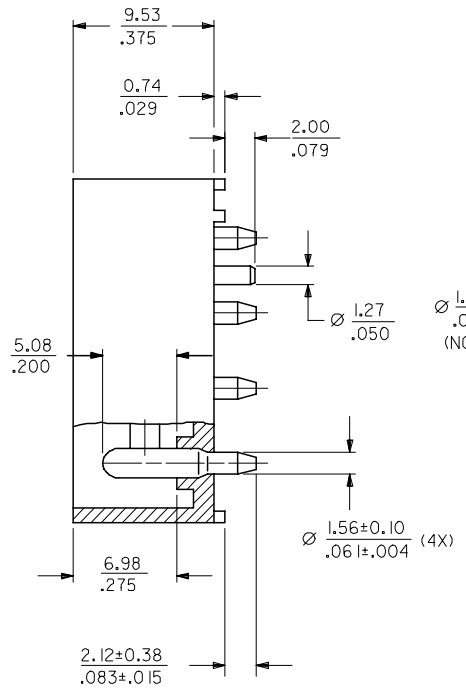
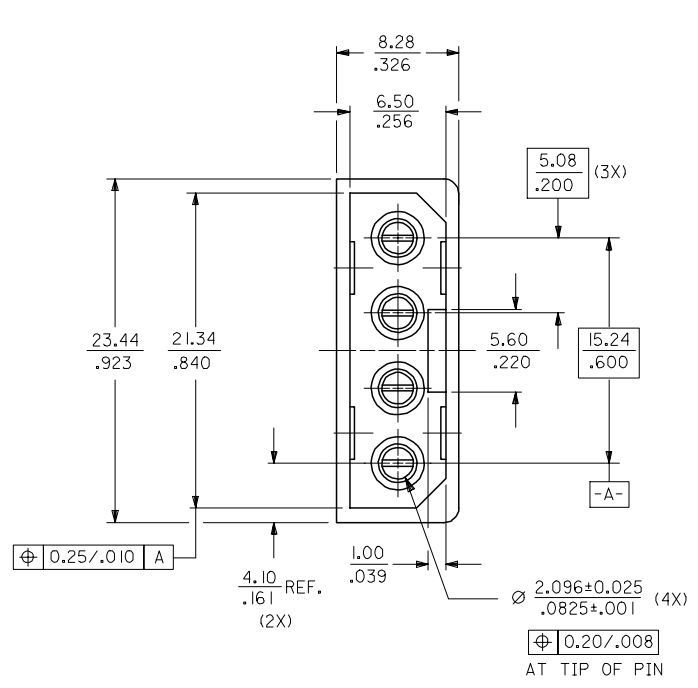


MAT'L NO.	ENG NO.	PLATING OPTION
15-24-4342	A-8981-4V6	TIN/LEAD
15-24-4742	A-8981-4V6-LF	TIN



- NOTES :
- PLATING
POSTPLATE 0.0025/-.000100 MIN. TIN/LEAD OR TIN OVER 0.0012/-.000050 MIN. NICKEL OVERALL.
 - PART TO MATE WITH 8981-4P*.
 - PRODUCT SPEC PS-8981-4V4/4R1-P APPLIES.
 - MATERIAL:
HOUSING - G.F. PCT UL94V-0
COLOR BLACK
TERMINAL - PHOS BRONZE

EDIT NOTE 3 EC NO: S2006-0765 DRWN: LO/IAO CHKD: BOKOK APPR: PTL/IM	2006/01/26 2006/01/26 2006/02/06	QUALITY SYMBOLS ▽=0 ▽=0	GENERAL TOLERANCES (UNLESS SPECIFIED)		DIMENSION STYLE MM/IN		SCALE NTS	DESIGN UNITS METRIC	THIRD ANGLE PROJECTION			
							DRAWN BY SKTOH		TITLE POWER CONNECTOR, 4 CKTS VERTICAL MOUNT			
							CHECKED BY GWANG		DATE 1991/10/17 1991/11/14			
							APPROVED BY RWONG		DATE 1991/11/14			
				MATERIAL NO. SEE TABLE		DOCUMENT NO. SD-8981-4V6		SHEET NO. 1 OF 1				
				DRAFT WHERE APPLICABLE MUST REMAIN WITHIN DIMENSIONS		THIS DRAWING CONTAINS INFORMATION THAT IS PROPRIETARY TO MOLEX INCORPORATED AND SHOULD NOT BE USED WITHOUT WRITTEN PERMISSION						